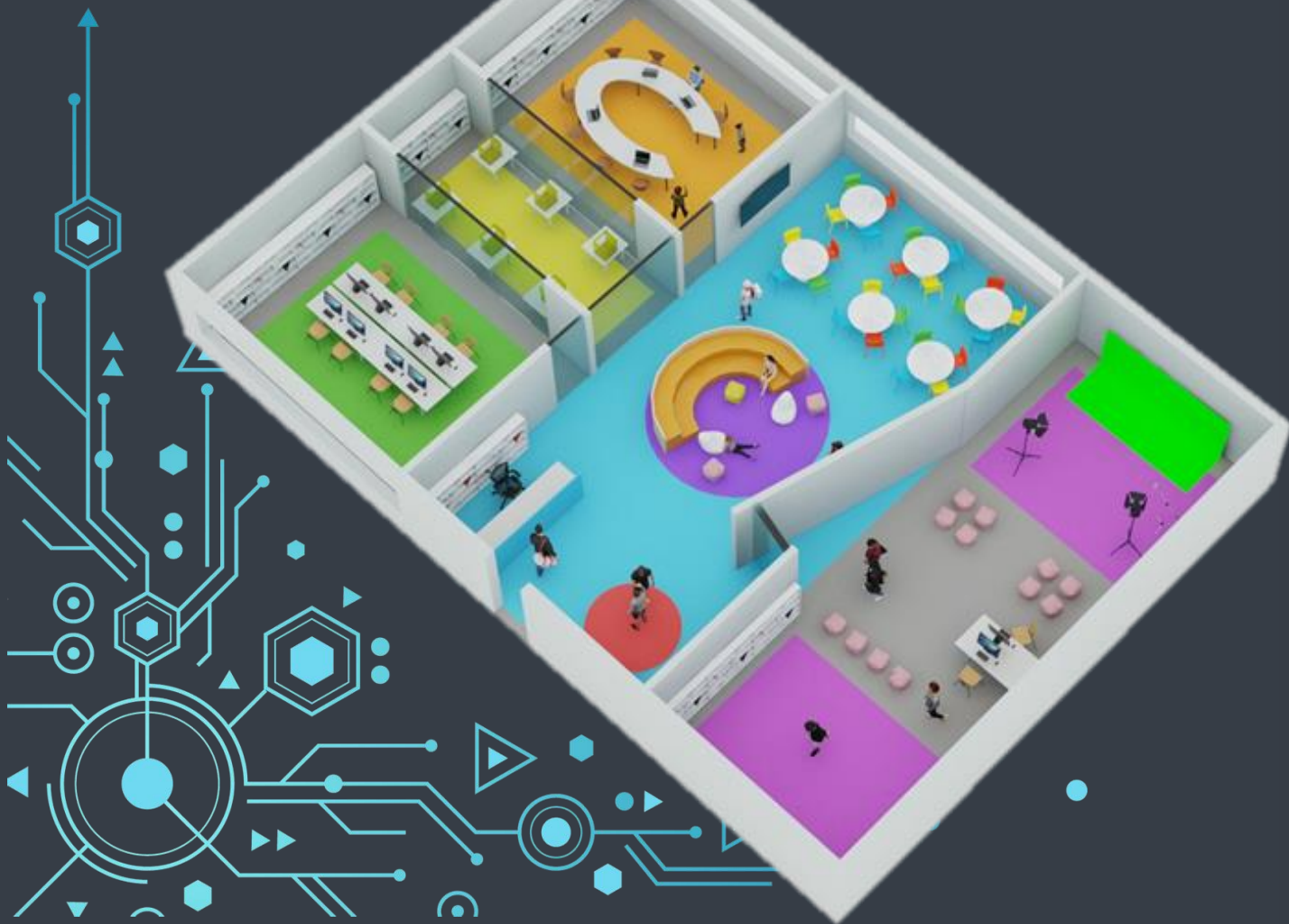


INNOVATION CENTRES IN EDUCATION



Project Manager: Ministry of Education, Religious Affairs and Sport

Implementing Agency:
CTI "Diophantus"

- Design and supervision of the implementation of the Innovation Centres (both the central infrastructure and the installed Innovation Centres in physical locations)
- Maintenance/support/operation of the Central Support Infrastructure

Duration: 3 years

Project budget: EUR 4,7 million (plus VAT)

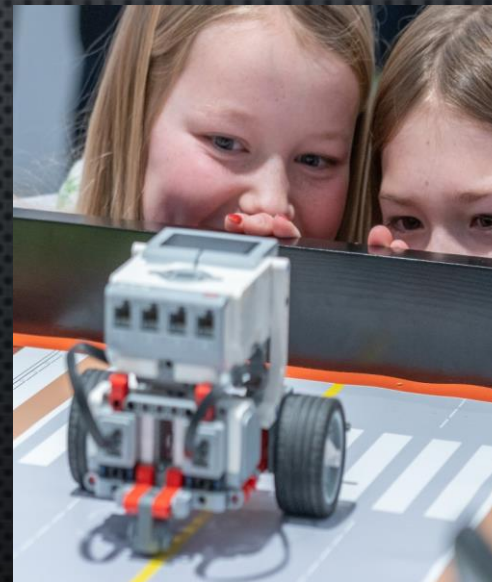
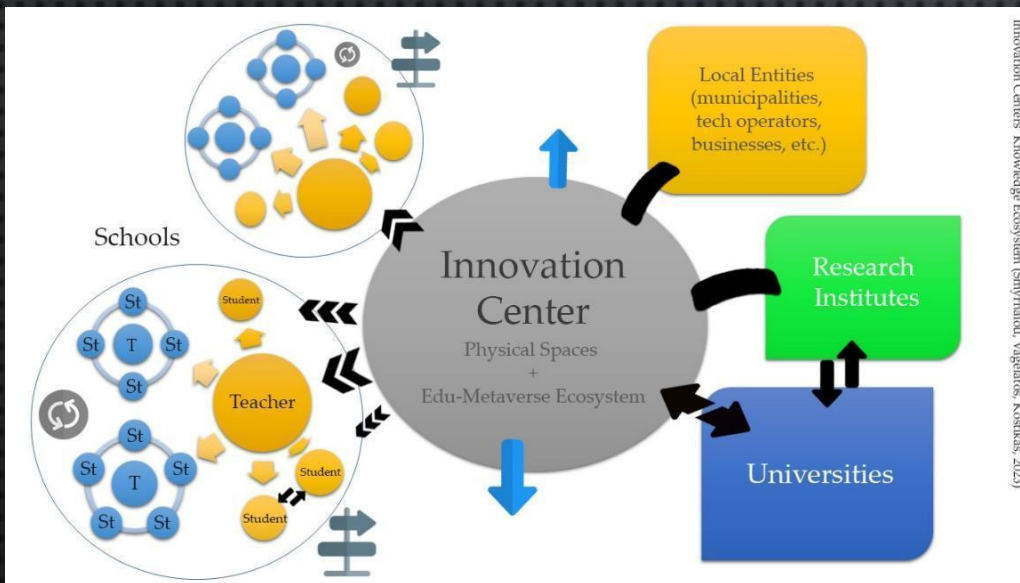
Inclusion in the **"Recovery and Resilience Facility" (RRF)**

OBJECTIVE OF THE PROJECT

The creation of a knowledge ecosystem (Innovation Centres) that will integrate and interconnect: the **school community**, the **local community**, **research institutions**, **universities** and **local businesses**, while interconnecting with **similar educational ecosystems in Europe** and elsewhere in the **world**.

The Innovation Centres will be purpose-built, high-quality environments for STEM education, Green growth, sustainable development and innovation promotion.

Each lab can be designed to support multiple topics and curriculum modules to meet the unique educational needs of each community





Digital Transformation & SDGs

The priorities of the updated Digital Education Action Plan (2021-2027)

- Quality and relevance of learning
- Inclusion and accessibility
- Flexible and adaptive learning environments
- Teacher empowerment and professional development
- Innovative pedagogical approaches

SUSTAINABLE DEVELOPMENT GOALS



Alignment with the **Sustainable Development Goals (SDGs)**, adopted by the United Nations in 2015 as part of the 2030 Agenda for Sustainable Development

Improvement of **DESI** indicators

Study of international practices on digital transformation



SDG 4 (Hellenic Statistical Authority)



Digital Education Action Plan (2021-2027)

Innovation Centres in 13 Regional Directorates of Education

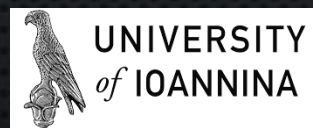


- **A Central Support Infrastructure:** to be set up by CTI, supporting remote areas and educational institutions, but also the innovation centres themselves
- **Innovation Lab in the CTI premises** for preliminary studies and activities, but also to support the education community with hands on applications, webinars and help desk.
- **Thirteen physical Innovation Centres:** located in physical spaces (one per region)

Innovation Centres in 13 Regional Directorates of Education

They will be sought/utilised to the maximum extent possible:

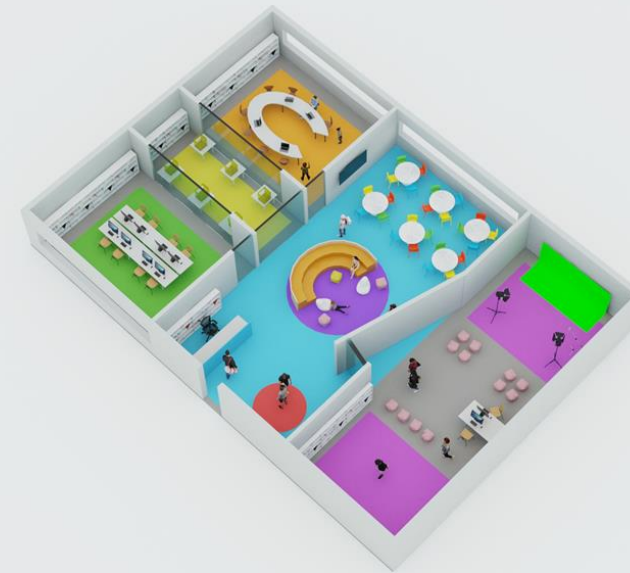
- Synergies with other programmes/structures/initiatives of the Ministry of Education
 - (e.g. NSRF: innovation structures, poles, hubs, etc.)
- Synergies with other programmes of the Regional Directorates of Education
- Synergies with other CTI's programmes/projects/actions
- Synergies with other programmes/projects/actions of the Municipalities or Regions
- Synergies with other European actions/options/directions
- Synergies with research institutions and universities



Innovation Centres in 13 Regional Directorates of Education

Spaces required and their use

- Extended Reality (XR) Lab
- AI & IoT Lab
- STEM & Robotics Lab
- Fabrication Lab / MakerSpace
- Meeting & presentation area



Innovation Centres in 13 Regional Directorates of Education

Cutting-edge issues that students will deal with



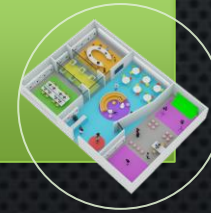
Metaverse



Augmented /
Virtual Reality



Robotics

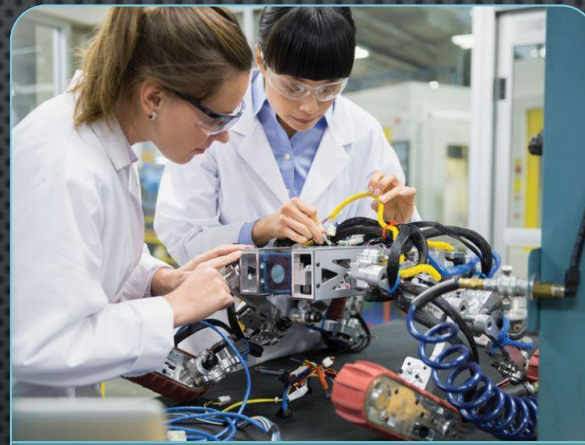


Innovation Centres in 13 Regional Directorates of Education

Cutting-edge issues that students will deal with



Digital
Literacy



Applied
Science



STEM & social
challenges

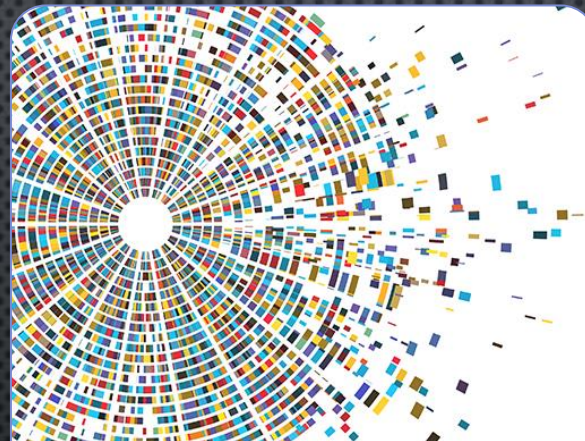
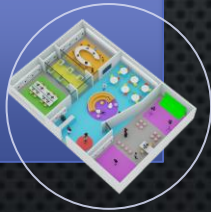


Innovation Centres in 13 Regional Directorates of Education

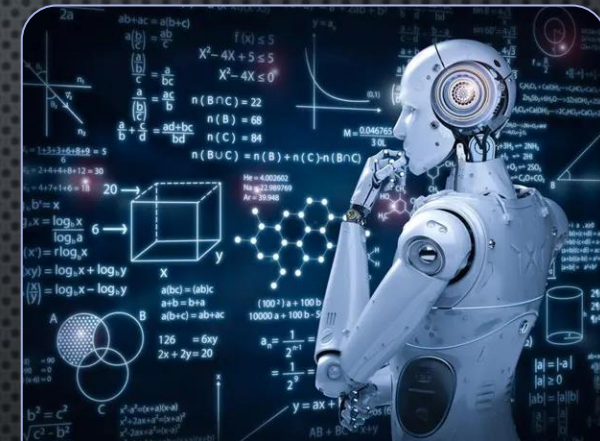
Cutting-edge issues that students will deal with



Digital Educational Games



Big Data



AI & Machine Learning



Innovative pedagogical/teaching approaches

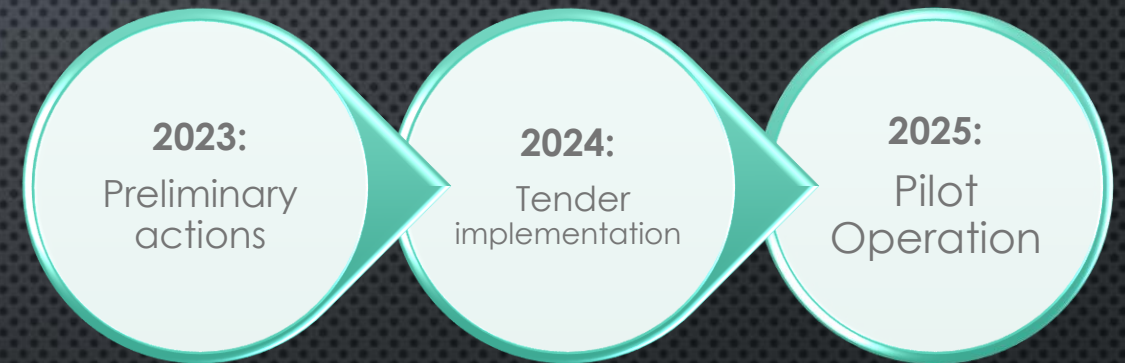
The OECD reports (2018, 2020) explore new forms of teaching, learning and assessment ("**Innovative Pedagogies for Powerful Learning**" (IPPL)) for an interactive world, in order to guide educators and policy makers in producing innovative practices that have the potential to bring about significant changes in educational practice. Some innovative practices enrolled in Innovation Centres design are:

1. **Artificial Intelligence in Education** - Preparing for life and learning in the age of AI
2. **Post-humanistic perspectives** - Addressing the relationship between humans and technology
3. **Learning from open information sources** - Using real world data for personal learning
4. **Inclusion of data ethics** - Ethical use of data in digital life and learning
5. **Social justice pedagogy** - Addressing injustices in life and society
6. **Esports** - Learning and teaching through collaborative virtual play
7. **Learning through animation** - Watching and interacting with short animations
8. **Multisensory Learning** - Using multiple senses to enhance learning
9. **Offline Learning** - Online learning over the Internet

Innovation Centres in 13 Regional Directorates of Education

Indicative Timeframe

- Design Finalisation/Analysis (6 months)
- Preparation of tender documents (4 months)
- Software implementation (16 months)
- Establishment of Regional ICs (12 months)
- Implementation of Virtual IC infrastructure (14 months)
- Project monitoring and dissemination of results (36 months)
- Internal Evaluation - Development of a Sustainability Plan (6 months)
- Pilot Operation - Operational Support (6 months)





Funded by
the European Union
NextGenerationEU



Institute of Computer
Technology & Publishing
"DIOPHANTUS"
| www.cti.gr
26-28 Mitropoleos Street,
10563, Athens, Greece